

# APOLLO

THE INTERNATIONAL MAGAZINE OF ART AND ANTIQUES FEBRUARY 2006

## THE GETTY VILLA A CELEBRATION OF ITS REOPENING

CONTEMPORARY DESIGN IN LONDON,  
LATIN AMERICAN PORTRAITS IN SAN  
ANTONIO AND JAMES BARRY IN IRELAND

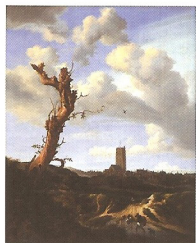
4.95



023



# TEN TO CATCH APOLLO'S SELECTION FOR THE MONTH AHEAD



'Jacob van Ruisdael' at the Royal Academy of Art, London, shows fifty paintings and thirty drawings of landscapes, from Jewish cemeteries through Scandinavian waterfalls to – of course – Dutch windmills. The exhibition (25 February-4 June) is accompanied by twenty British and continental landscapes that show Ruisdael's influence, in the Madejski Fine Rooms. (+44 [0] 20 7300 8000)



'Exponatec', a fair in Cologne of museum trade utilities such as security (left) and lighting, has been moved to coincide with the Cologne Fine Art Fair (both 15-19 February). The latter includes a loan exhibition of pre-Columbian art. [www.cologne-fine-art.de](http://www.cologne-fine-art.de)

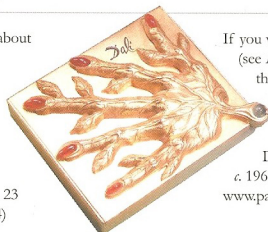
If you hate sport but have to visit the Winter Olympics in Turin, there is a remedy. The resort Sestriere, site of the downhill skiing, also hosts 'Snow Show' (6 February-19 March), an ice sculpture project by Jaume Plensa, Norman Foster and others. [www.thesnowshow.com](http://www.thesnowshow.com)



Whistler, Sargent and Mary Cassatt are some of the artists featured in 'Americans in Paris 1860-1900' at the National Gallery, London, which examines the impact of Paris on expatriate Americans. The exhibition (22 February-21 May) is accompanied by a display of Cassatt prints (ends 7 May). (+44 [0] 20 7747 2885)



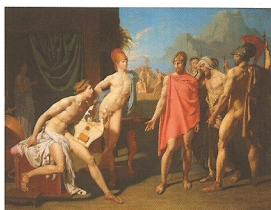
Conservationists are concerned about the threat to Moscow's historic buildings from redevelopment. Former *Times* correspondent Clementine Cecil, founder of the Moscow Architecture Preservation Society, is lecturing about the problem at the Royal Geographic Society, London, on 23 February. (+44 [0] 20 7730 53 44)



If you visit the Palm Beach fair (see Art Market, pp. 90-95) then drop into the Palm Beach Jewelry and Antique Show (17-21 February). Left: Salvador Dalí's *Transmutational*, c. 1965, with Hodgkin. [www.palmbeachshow.com](http://www.palmbeachshow.com)

'It's the event of spring 2006', gushes the Louvre's press release.

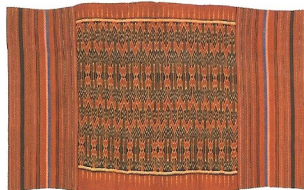
It has a point: its 'Ingres' exhibition (24 February-15 May) brings together eighty paintings and 104 drawings, making it the first to survey all of parts of his career in equal detail. Right: *Agamemnon at Achilles' Tent*. (+33 [0] 1 40 20 55 55)



J.M.W. Turner wrote in 1776 that the smooth paper made at the Turkey Mill in Kent was 'what I have long been in search of for making wash'd Drawings'. 'Mr Whatman's Mill' (22 February-4 June) at the Yale Center for British Art analyses the use made of this paper by artists, with works by Turner, Cotman (right) and Sandby. (+1 203 432 2800)



Spain's contemporary art fair, ARCO, takes place 9-13 February. The 150 international participating galleries include Ramis Barquet, Mexico, which has Fernanda Brunet's *Sisiboon* (left). [www.arco.ifema.es](http://www.arco.ifema.es)



This shroud from the Celebes Island, Indonesia, is one of fifty exhibits in 'The Fabric of Life: Ikat Textiles of Indonesia' (28 February-24 September) at the Metropolitan Museum, New York. (+212 535 7710)